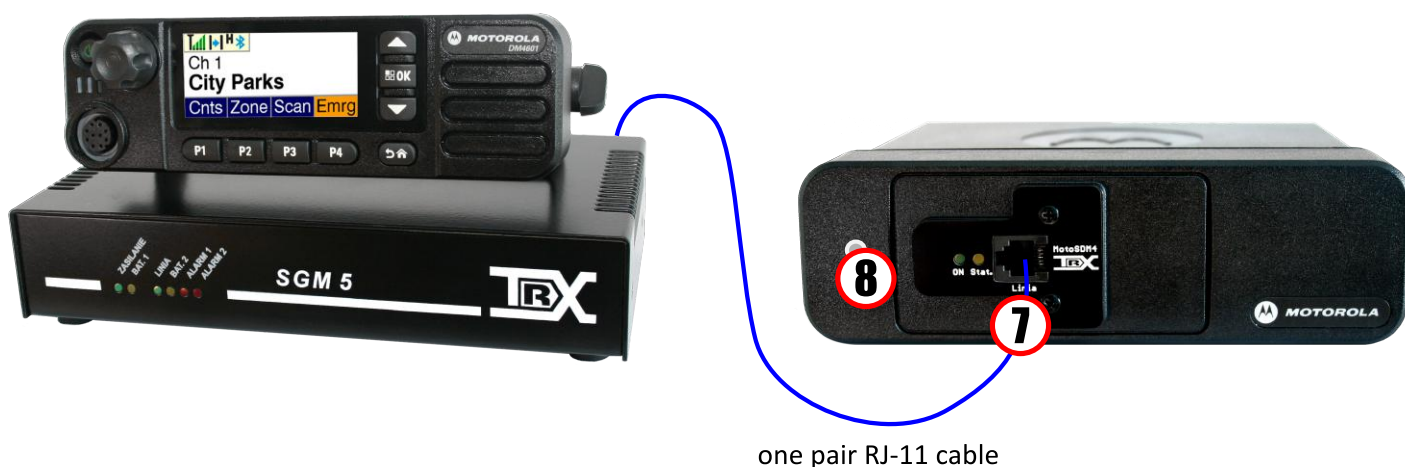


TRX SDM4600

Modules are connected by one twisted pair RJ-11 cable (classic telephone line).



1. 230V AC input
2. Fuse socket [1A 230V fuse]
3. 12V backup battery terminals
4. Additional microphone input (Motorola pinout)
5. Head Unit connector
6. Analog audio output (for voice recording)
7. Line in/out (connection with Radio Module)
8. No AC, Alarm1 connector [3.5mm Jack]

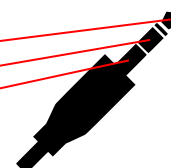
Battery operation and alarm (connector 8)

Device can inform user about power supply state (is it working from battery or from AC - if power supply provides this function). Used pins 1 and 3 (pic below). If works from battery (disconnected pins 1 and 2) BAT1 led on Head Unit Module lights up.

Second option is Alarm - disconnecting pin 1 and 2 of number 8 connector turns on Alarm1 LED of Head Unit Module.

Both pins are NC.

Battery pin 3
Alarm pin 2
Ground pin 1



TRX s.c.
ul. Wierzbowa 8
15-743 Białystok

tel. 00 48 662 88 11
biuro@trx.pl

TRX SDM4600 ASSEMBLY GUIDE

1



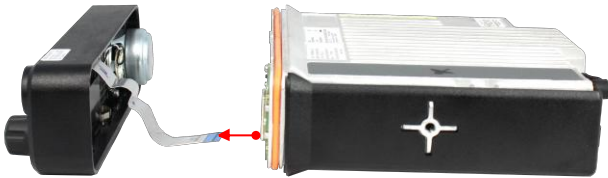
Take off control head from radio

2



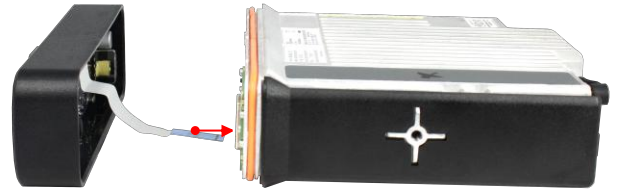
Separate control head and radio

3



Unplug flex cable

4



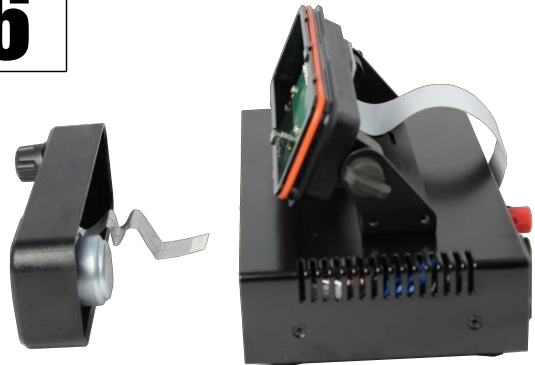
Plug in SDM4600 Radio Module

5



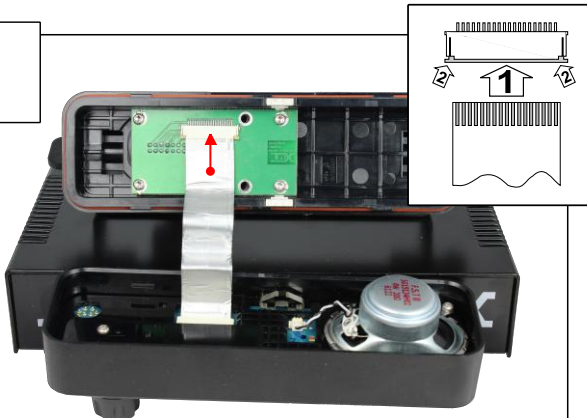
Snap in enclosure

6



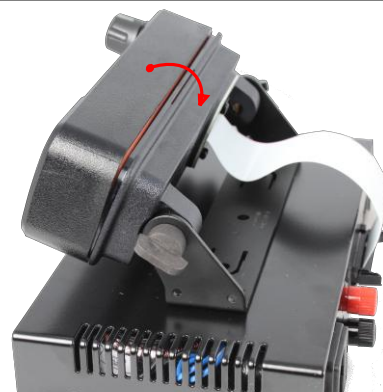
Prepare control head and Control Head Module

7



Plug in control head flex cable into
SDM4600 Control Head Module

8



Snap in enclosure